



***LED WAHOO***

*by Life at sea Maldives*





### Engines

2 x SUZUKI DOUBLE  
PROPELLER DF300 300HP



### Internet

Ooredoo 5G Wi-Fi



### Top Speed

60 MPH



### Rod Holders

32 holders



### Dimensions

L: 11.58m (38ft) | W: 3.5m (11.5ft) |  
D: 1.52m (5ft)



### Audio System

6 x 8" speakers , 2 x 10" woofers



### Passenger Capacity

8 passengers (seating capacity)



### Navigation Displays

2 x Raymarine Axiom with Cyclone  
Radar



### Toilet

Located under the console



### Autopilot

Raymarine



### Outrigger System

TACO Marine Outrigger for trolling



### Fish Finder

Equipped with a 1000m hull-  
through transducer







WITH TOP OF THE LINE FISHING GEAR & EQUIPMENT



**ZENAQ**  
I'm an angler.

**AWA**  
ホワイト

**SHIMANO**

**okuma**  
INSPIRED FISHING

**MAXEL**  
engineered excellence

*Da Hunter*  
CUSTOM RODS & TACKLE

**HR**  
HEARTY RISE

**VARIVAS®**

**Check'n Bottom**

**LICE AND EVIL**

**BKK®**



### General Specifications:

- Engines: 2 x SUZUKI DOUBLE PROPELLER DF300 300HP
- Top Speed: 60 MPH
- Type: Fiberglass
- Dimensions:
  - Length: 11.58m (38ft)
  - Width: 3.5m (11.5ft)
  - Depth: 1.52m (5ft)
- Gross Tonnage: 3 tons
- Passenger Capacity: 8 passengers
- Toilet: Located under the console

### Fishing Equipment:

- Outrigger System: TACO Marine Outrigger for trolling
- Rod Holders: 32 holders
- Lockers for Caught Fish: 4 lockers
- Fish Finder: Equipped with a 1000m hull-through transducer

### Navigation and Electronics:

- Navigation Displays: 2 x Raymarine Axiom with Cyclone Radar
- Autopilot: Raymarine
- Night Vision Camera
- Binoculars: Fujinon Techno-Stabi TS-X 1440

### Lighting:

- Lights: Fully-fledged RGB Spectrum Lumitech Pro Lights, including underwater lights

### Communication and Connectivity:

- Internet: Ooredoo 5G Wi-Fi
- Marine Radio: VHF Marine Radio
- Satellite Phone: Thuraya XT Lite

### Entertainment:

- Audio System: Wireless JL Audio Multimedia System with:
  - 6 x 8" speakers
  - 2 x 10" woofers

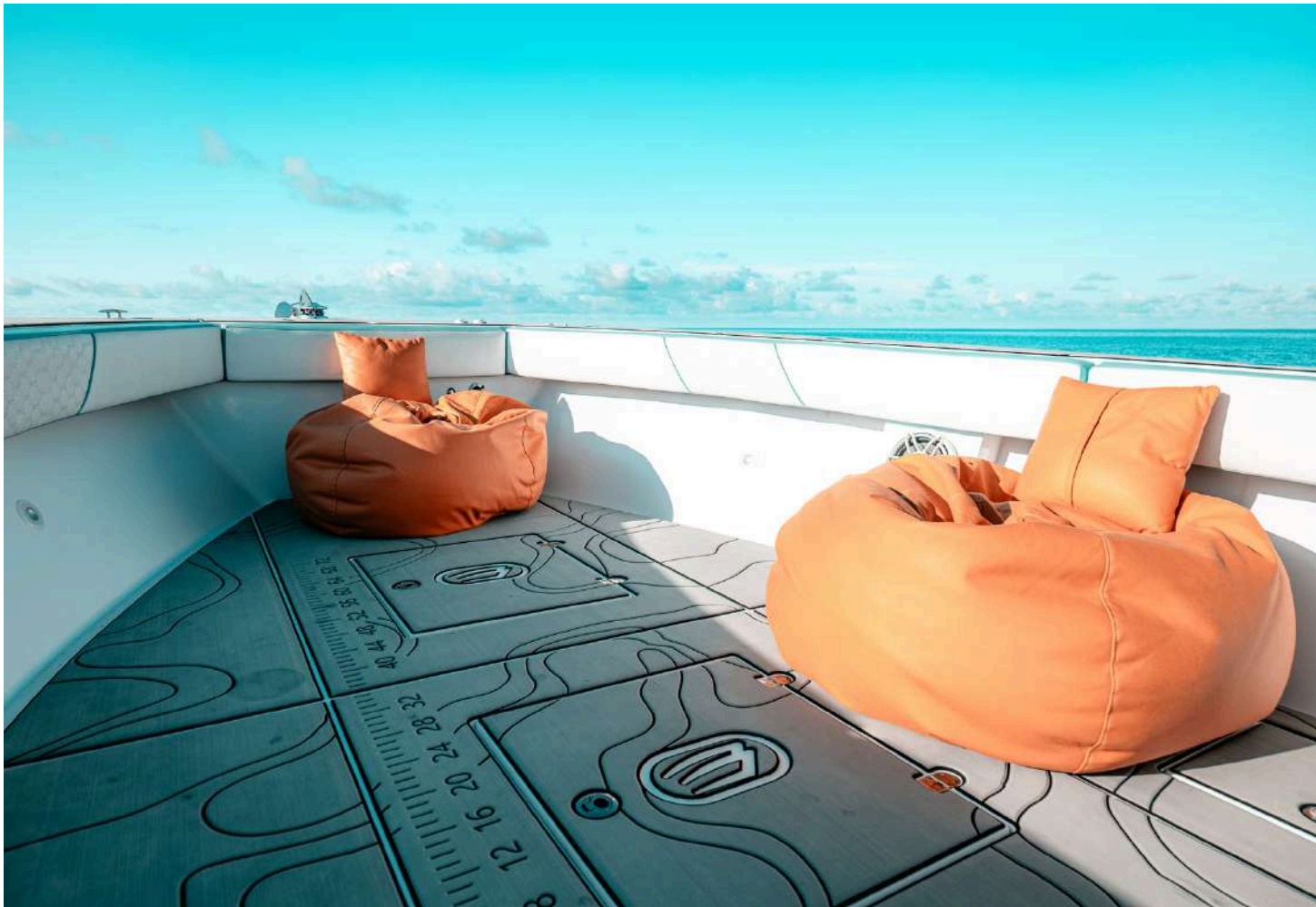
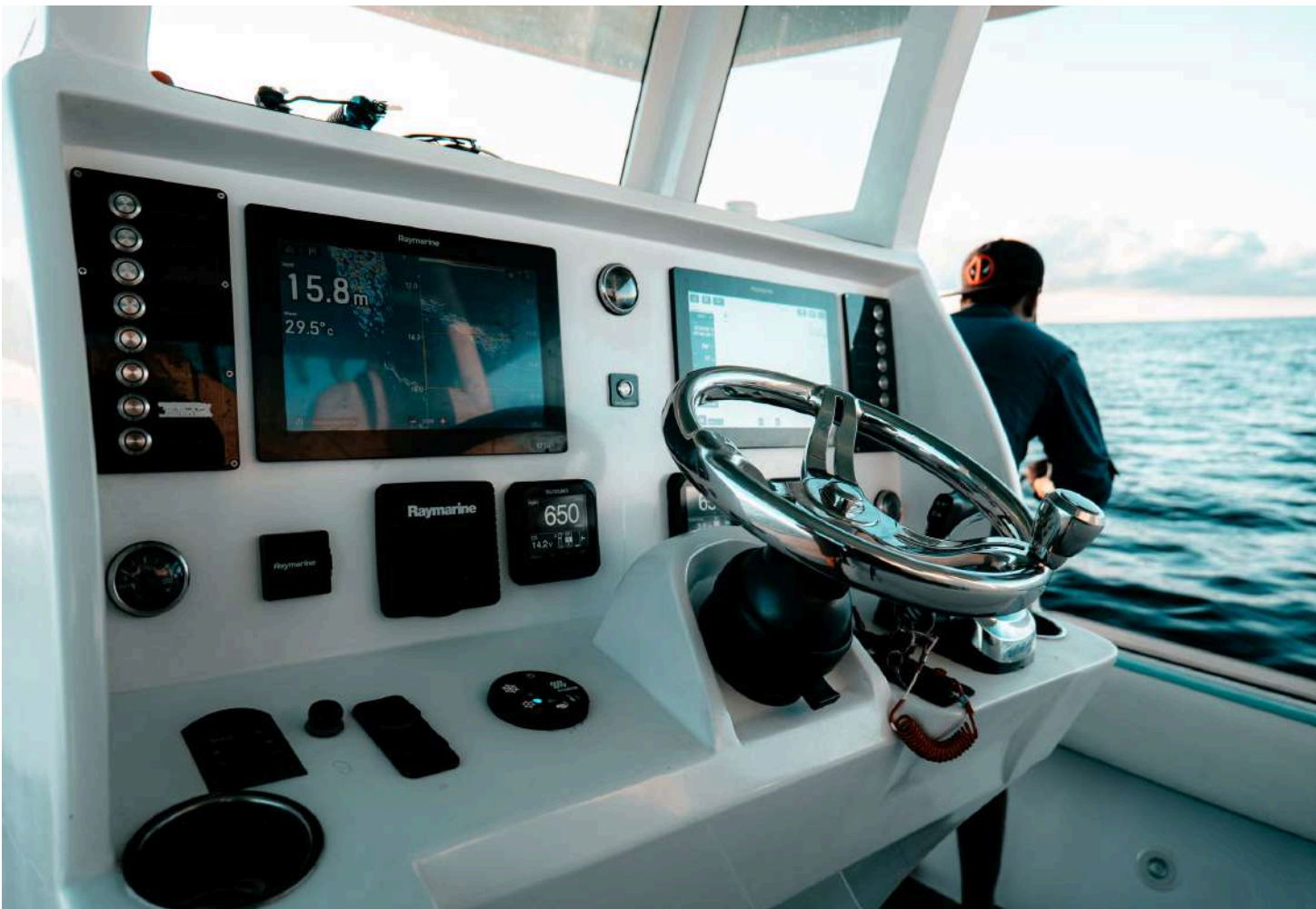
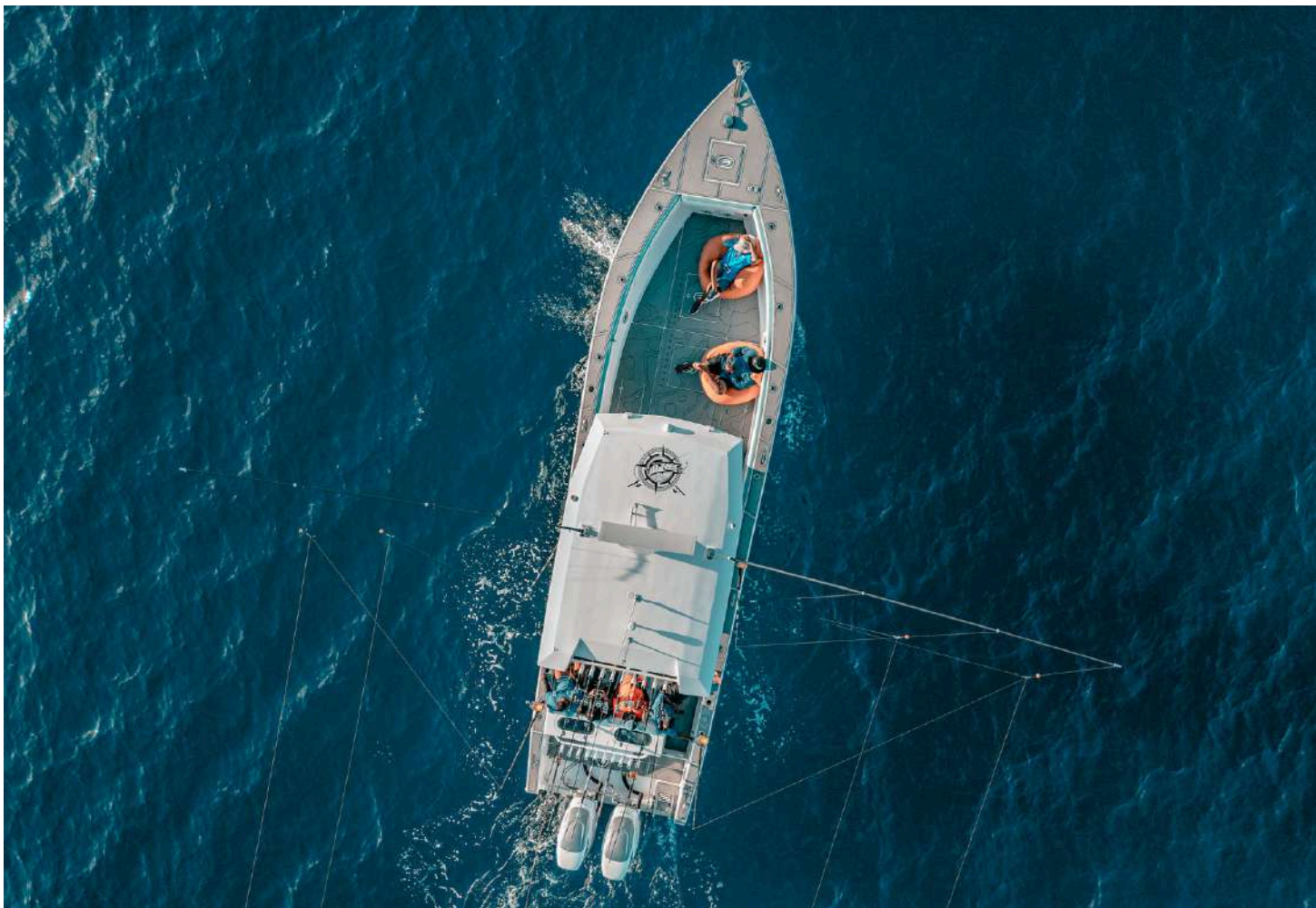
### Safety:

- Life Jackets: Available for passengers

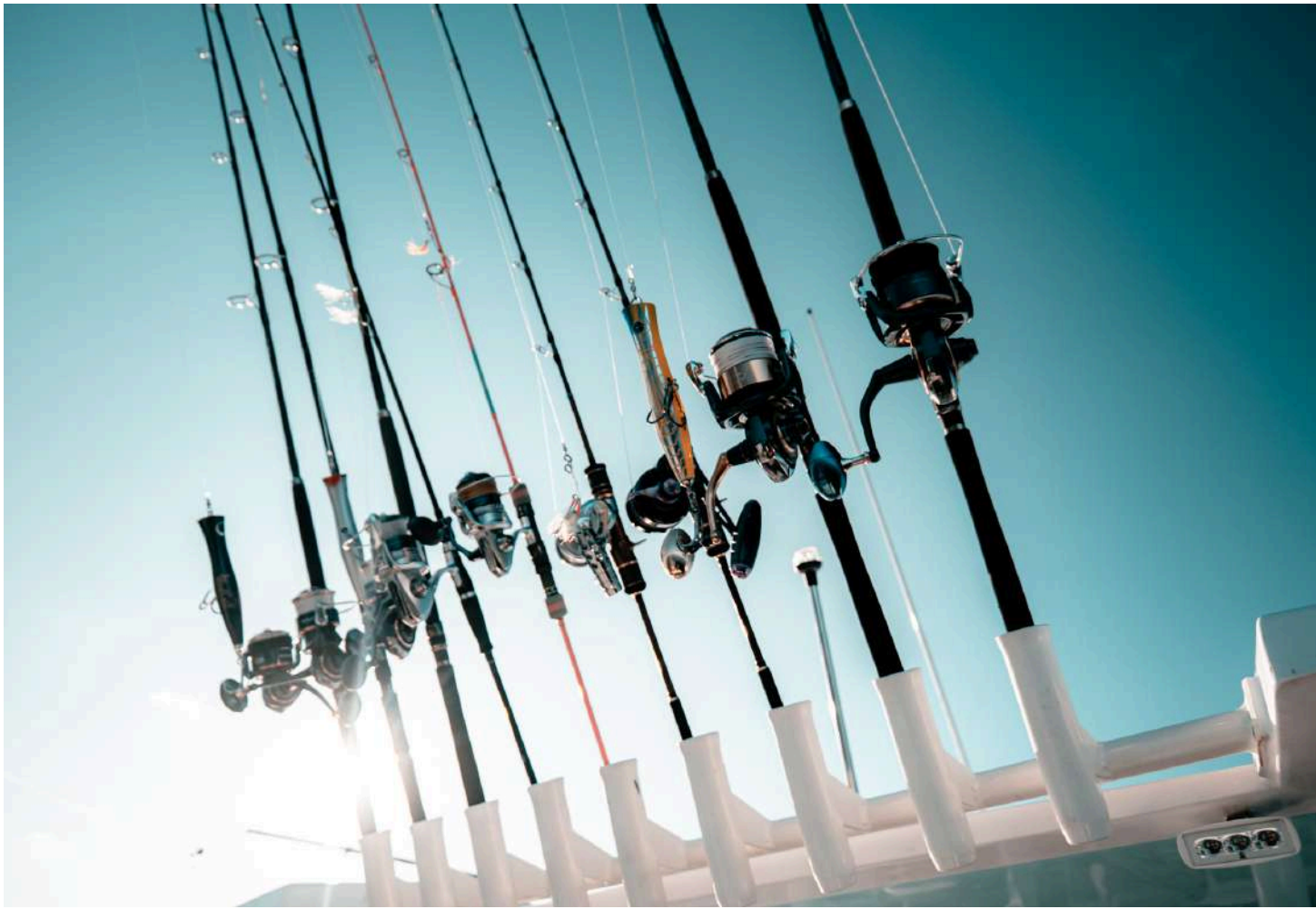
This boat is fully equipped for high-speed, luxury fishing, and entertainment at sea



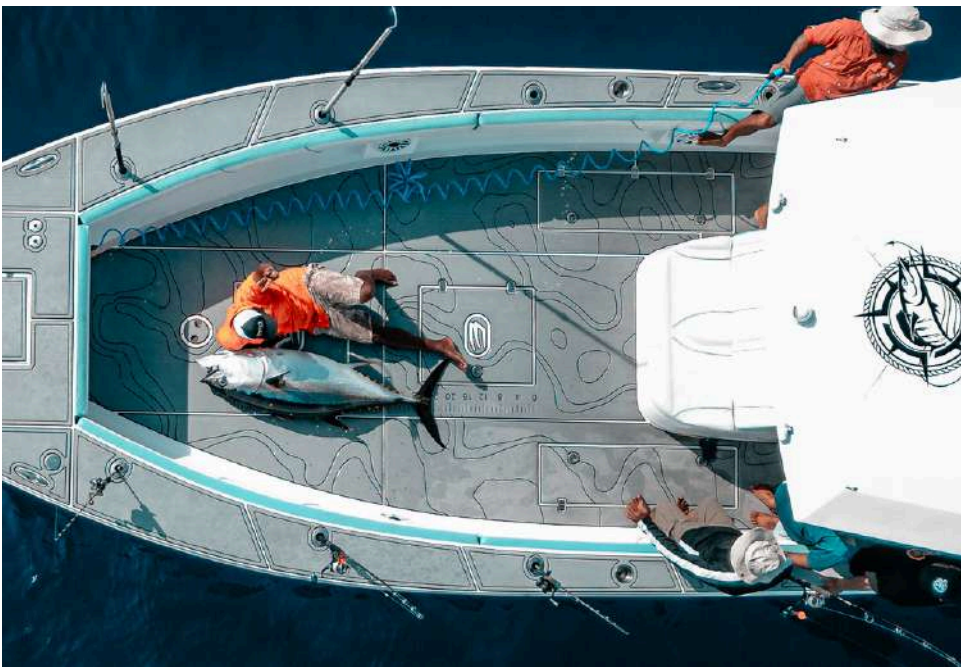
















***LEOWAHOO***

## Contact Us

---

✉ [bookings@leowahoo.mv](mailto:bookings@leowahoo.mv)

☎ +960 7997332

☎ +960 7820822